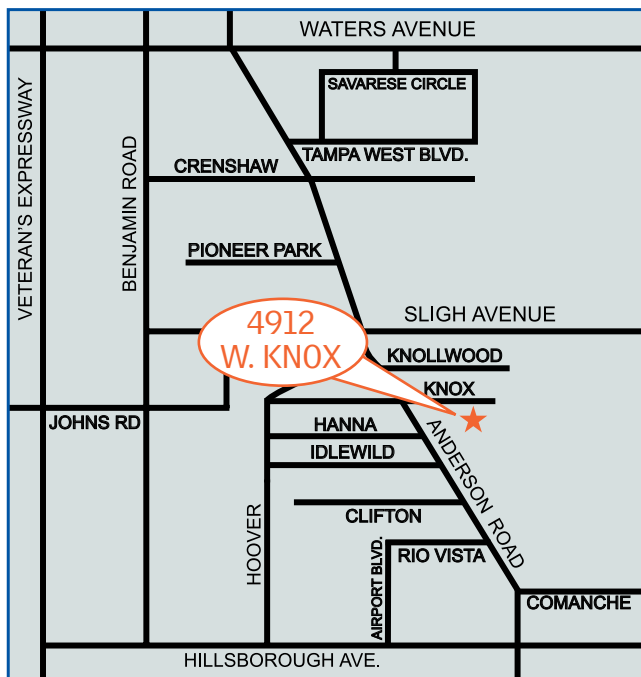


61,000 SQ. FT. WAREHOUSE FOR SALE



**4912 W. Knox Street
Tampa, FL 33634**



BUILDING SIZE:	61,000 Square Feet
VACANT:	16,300 Square Feet
LEASED:	44,700 Square Feet
LOADING:	10 Dock High + 1 Ramp
EAVE HEIGHT:	20 Feet
POWER:	3 Phase Available
CONSTRUCTION:	Concrete Block
SALE PRICE:	\$2,940,000

FOR MORE INFORMATION CONTACT:

Industrial Property Group, Inc.

Licensed Real Estate Broker

2202 N. Westshore Blvd. • Suite 200 • Tampa, FL 33607

CRAIG M. CAPO at craig@capoindustrial.com

Office: 813.639.7577 • Cell: 813.335.3361

www.tampaindustrialrealestate.net

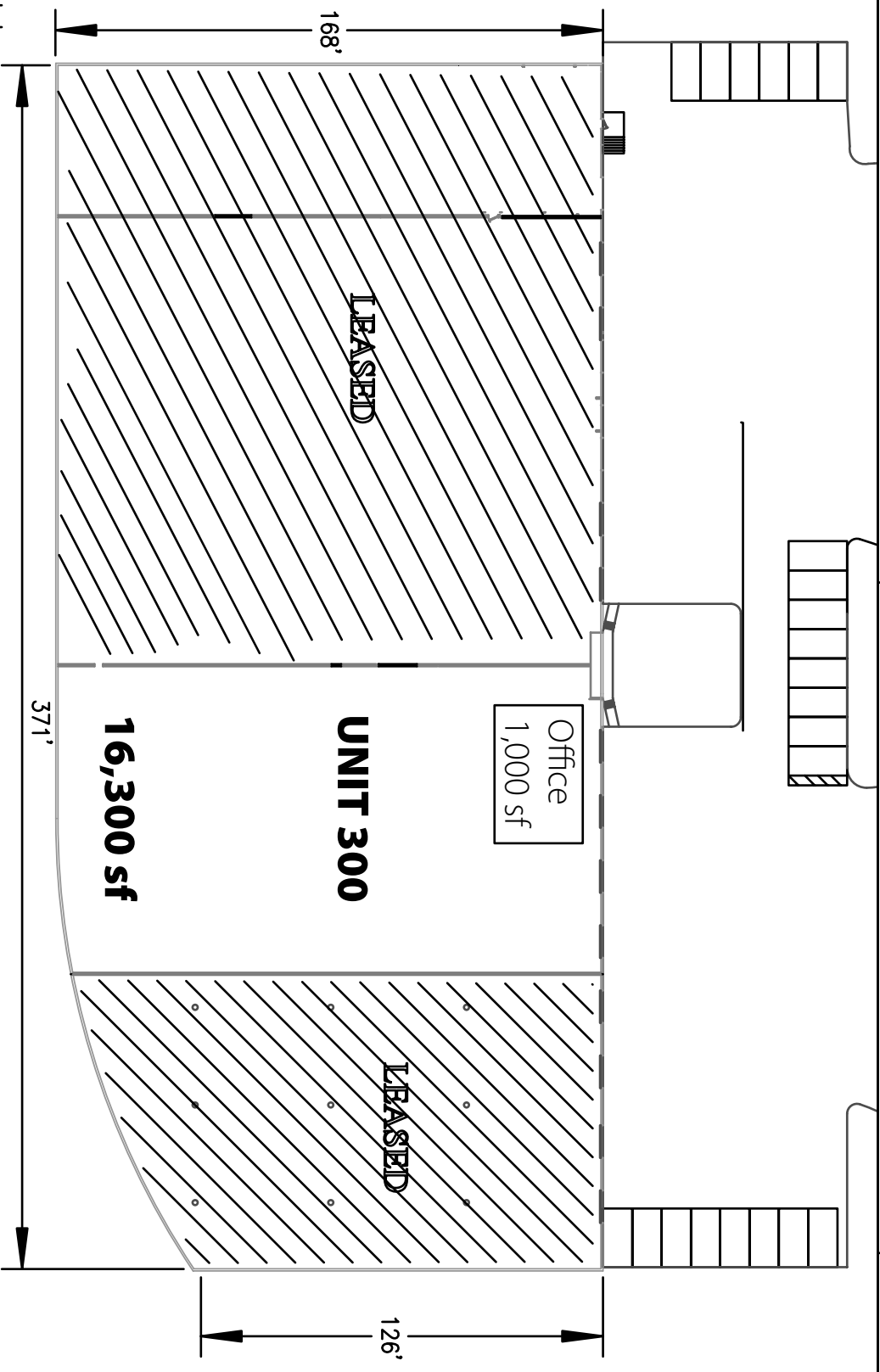
No warranty or representation, expressed or implied, is made as to the accuracy of the information contained herein, and same is submitted subject to errors, omissions, change of price, rental or other conditions, withdrawal without notice, and to any special listing conditions imposed by our principals.

Dock high warehouse

61,000 Sq. Ft. Distribution Warehouse

4912 West Knox St., Tampa, FL

SPACE AVAILABLE



Notes:
 All dimensions are approximate.
 Building is sprinkled throughout.
 Building height is 20' at the eaves.
 Unit 300 is 16,300 sf



Industrial Property Group, Inc.

Licensed Real Estate Broker

FOR MORE INFORMATION CONTACT:
CRAIG M. CAPO at craig@capoindustrial.com
 2202 N. Westshore Blvd. • Suite 200 • Tampa, FL 33607
 Office: 813.639.7577 • Cell: 813.335.3361
www.tampaindustrialrealestate.net

No warranty or representation, expressed or implied, is made as to the accuracy of the information contained herein, and same is submitted subject to errors, omissions, change of price, rental or other conditions, withdrawal without notice, and to any special listing conditions imposed by our principals.