

11,000 Sq. Ft. Warehouse FOR LEASE



**5128 W. Idlewild Avenue
Tampa, FL 33634**



SPACE SIZE:	11,000 Square Feet
OFFICE:	1,000 Square Feet
WAREHOUSE:	10,000 Square Feet
FREE MEZZANINE:	1,000 Square Feet
LOADING:	2 Grade Level Doors (12' x 14')
CLEAR HEIGHT:	20 Feet
POWER:	3 Phase
CONSTRUCTION:	Concrete Block
LEASE RATE:	\$3.50 NNN

FOR MORE INFORMATION CONTACT:

Industrial Property Group, Inc.

Licensed Real Estate Broker

2202 N. Westshore Blvd. • Suite 200 • Tampa, FL 33607

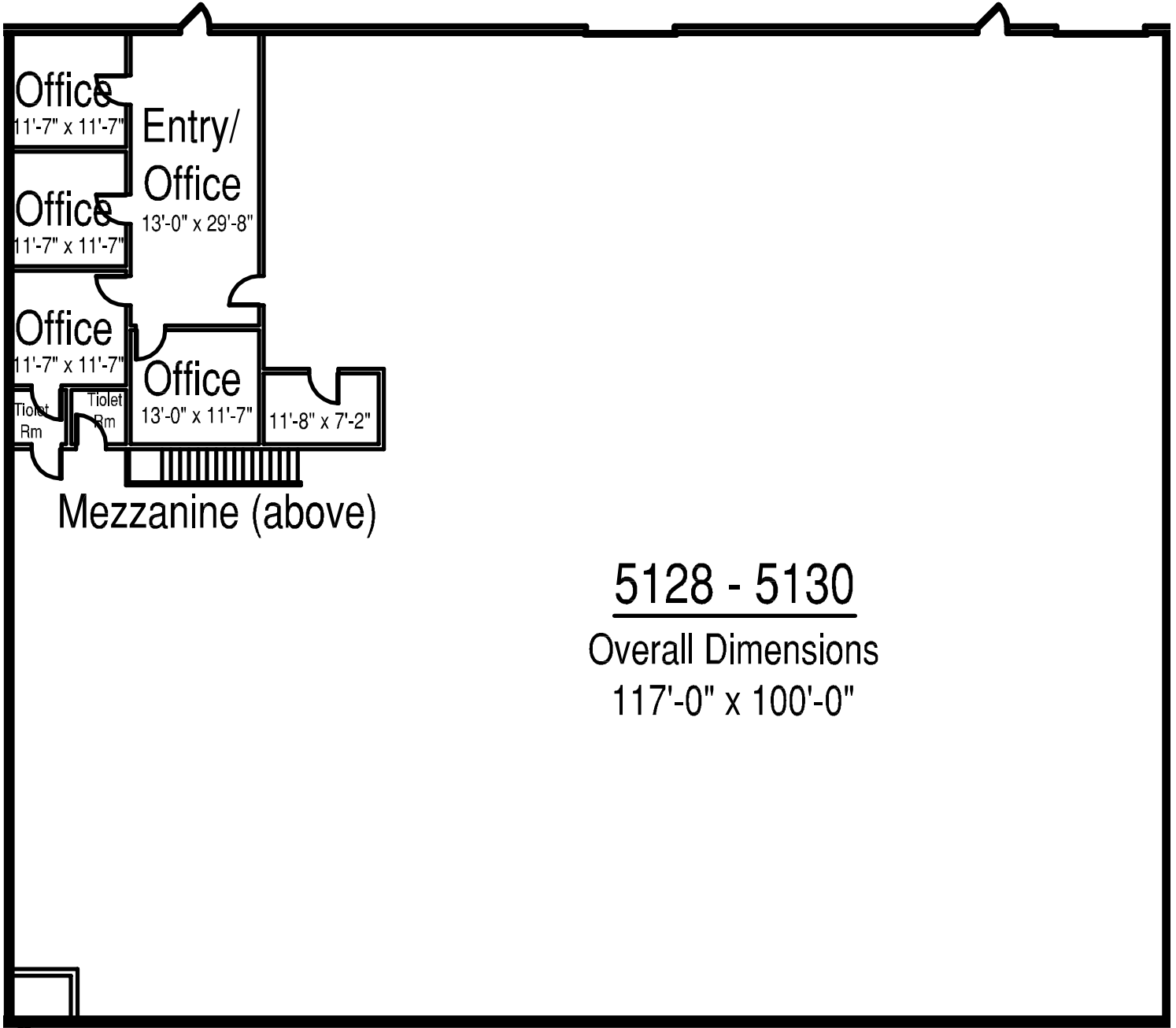
CRAIG M. CAPO at craig@capoindustrial.com

Office: 813.639.7577 • Cell: 813.335.3361

www.tampaindustrialrealestate.net

No warranty or representation, expressed or implied, is made as to the accuracy of the information contained herein, and same is submitted subject to errors, omissions, change of price, rental or other conditions, withdrawal without notice, and to any special listing conditions imposed by our principals.

**5128 W. Idlewild Ave.
Tampa, FL 33634**



5128 - 5130

Overall Dimensions

117'-0" x 100'-0"

Industrial Property Group, Inc.

Licensed Real Estate Broker

2202 N. Westshore Blvd. • Suite 200 • Tampa, FL 33607

FOR MORE INFORMATION CONTACT:

CRAIG M. CAPO at craig@capoindustrial.com

Office: 813.639.7577 • Cell: 813.335.3361

www.tampaindustrialrealestate.net

No warranty or representation, expressed or implied, is made as to the accuracy of the information contained herein, and same is submitted subject to errors, omissions, change of price, rental or other conditions, withdrawal without notice, and to any special listing conditions imposed by our principals.